

Dishwasher Accessory



4-Compartment Cutlery Box

JW-4C

Overall Size (mm): 500 X 290 X 100
 Compartment Size (mm): 11 X 11
 Material: PP
 Pcs/Carton: 12



Rack Dolly without Handle

JW-RT

Overall Size (mm): 540 X 540 X 180
 Capacity: 150Kgs
 Material: PP
 Pcs/Carton: 1



Rack Dolly with Handle

JW-ST

Overall Size (mm): 540 X 540 X 180
 Capacity: 150Kgs
 Material: PP
 Pcs/Carton: 1

JW-STH

Capacity: 150Kgs
 Material: SS
 Pcs/Carton: 6



8-Compartment Cutlery Basket with Handle

JW-8B

Overall Size (mm): 427 X 208 X 150
 Material: PP
 Pcs/Carton: 12

JW-8H

Overall Size (mm): 427 X 208 X 150
 Material: PP
 Pcs/Carton: 12



JW-DC240

DC240 can hold 4.5" to 13" plates, trays, dishes, maximum 8 stacks, total 400 pieces, 6 dividers.
 Material: PE
 Color: Brown
 Oversize: 930*720*800mm



JW-DC160

DC160 can hold 4.5" to 13" plates, trays, dishes, maximum 4 stacks, total 160-200 pieces, 4 dividers.
 Material: PE
 Color: Brown
 Oversize: 900*725*800mm



JW-DC320

DC320 can hold 4.5" to 13" plates, trays, dishes, maximum 8 stacks, total 400 pieces, 6 dividers.
 Material: PE
 Color: Brown
 Oversize: 1090*720*800mm

Ice Cream Machine

Control Panel:

- Indicator shows the refrigerating temperature/ Adjust the temperature between +1 to 10 degree
- Counter indicator/ Lack material alarm
- Indicator shows the percentage of the produce process/ shows the motor current
- Produce switch
- Wash switch
- Overload rest switch/ ice cream hardness adjustment
- Keep fresh/pre-cooling switch, ice cream hardness adjustment

Double air pumps:

- Full automatic double air pumps are designed to let more air in.
- Feed system control by electric valve.
- High over-run rate ups to 80%~100%.
- The refrigerating speed is quicker than common machine by 40%. It can save 40%-50% material.

Counter indicator:

- Calculate how many cups ice cream have sold.
- The number of discharged ice cream shows on the counter indicator.
- Good for management with the certain key to rest the indicator back "000".



Soft Ice Cream Machine IN221

Dimension(LxWxH): 540×770×1480mm
 Hopper Capacity: 2×7L
 Voltage: 220V/50Hz
 Power: 1.7Kw
 Refrigerant: R404a
 Output: 11-16kg/h 18-25L/h
 N.W/G.W: 145/195kg
 Packing size: 900×700×1640mm



Soft Ice Cream Machine IN222

Dimension(LxWxH): 540×770×1480mm
 Hopper Capacity: 2×7L
 Voltage: 220V/50Hz
 Power: 1.7Kw
 Refrigerant: R404a
 Output: 11-16kg/h 18-25L/h
 N.W/G.W: 145/195kg
 Packing size: 900×700×1640mm



Soft Ice Cream Machine IN838

Dimension(LxWxH): 518×740×1280mm
 Hopper Capacity: 2×7L
 Voltage: 220V/50Hz
 Power: 1.7Kw
 Refrigerant: R404a
 Output: 11-16kg/h 18-25L/h
 N.W/G.W: 135/178kg
 Packing size: 700×900×1430mm

IN331

Dimension(LxWxH): 540×770×1480mm
 Hopper Capacity: 2×7L
 Voltage: 220V/50Hz
 Power: 2.4Kw
 Refrigerant: R404a
 Output: 22-28kg/h 28-38L/h
 N.W/G.W: 160/210kg
 Packing size: 900×700×1640mm

IN332

Dimension(LxWxH): 540×770×1480mm
 Hopper Capacity: 2×7L
 Voltage: 220V/50Hz
 Power: 2.4Kw
 Refrigerant: R404a
 Output: 22-28kg/h 28-38L/h
 N.W/G.W: 160/210kg
 Packing size: 900×700×1640mm



Ice Cream Machine



Soft Ice Cream Machine

IN8081
Dimension(LxWxH): 518×740×780mm
Hopper Capacity: 2×7L
Voltage: 220V/50Hz
Power: 1.7Kw
Refrigerant: R404a
Output: 11-16kg/h 18-25L/h
N.W/G.W: 108/138kg
Packing size: 900×700×840mm



Soft Ice Cream Machine

IN8082
Dimension(LxWxH): 518×740×780mm
Hopper Capacity: 2×7L
Voltage: 220V/50Hz
Power: 1.7Kw
Refrigerant: R404a
Output: 11-16kg/h 18-25L/h
N.W/G.W: 108/138kg
Packing size: 900×700×840mm



Soft Ice Cream Machine

INA11
Dimension(LxWxH): 422×592×622mm
Hopper Capacity: 7L
Voltage: 220V/50Hz
Power: 0.9Kw
Refrigerant: R404a
Output: 8-11kg/H 13-18L/H
N.W/G.W: 59/90kg
Packing size: 740×570×750mm



Hard Ice Cream Machine

INH28S
Dimension(LxWxH): 540×770×1480mm
Tank Capacity: 16.5L
Voltage: 220V/50Hz
Power: 3.4KW
Refrigerant: R404a
Production: 26-40kg/h 40-58l/h
NW/GW: 168/182kg
Packing Dimensions: 880×625×1550mm



Hard Ice Cream Machine

INH18S
Dimension(LxWxH): 518×740×1240mm
Tank Capacity: 7L
Voltage: 220V/50Hz
Power: 1.7KW
Refrigerant: R404a
Production: 22-28kg/h 28-38l/h
NW/GW: 138/178kg
Packing Dimensions: 880×625×1550mm

Compressor: Aspera (Italy famous brand)
Expansion Valve: Danfoss (Denmark famous brand)
Counter with lock: calculate and indicate how much ice cream has been sold, and with a key to reset the number.
Digital indicators: show the temperature of feed hoppers, the amount of ice cream you sold and the percent value of producing progress
Overload Protection: stop the machine if overload occurs automatically
Over pressure protection: protect the compressor from over pressure damage.
Lack of material alarm
Hardness adjusting function
Wash function
Work normally in high ambient temperature
Condenser: air-cooling
Optional Parts/Functions:
Air pump: get a high Overrun rate, lower cost;
Keep-fresh function: keep the ice cream fresh all day;
Pre-cooling function: pre-cool the mix of the hoppers to enhance production progress.
CE Approval
 The warranty is one year.
 Packing is wooden box, good for exporting and rough handling during sea shipment.



Ice Maker



Ice Maker

XJ-1900 A/W
Voltage: 220/50HZ
Capacity: 890kg/24h
Power: 4.059Kw
Storage Capacity: 500kg
Refrigerant: R404
Compressor: France Tecumseh or US Cperland
Cooling Mode: Air Cooling / Water Cooling
Dimension: 1260×830×1950mm

XJ-1400 A/W

Voltage: 220/50HZ
Capacity: 665kg/24h
Power: 3.064Kw
Storage Capacity: 500kg
Refrigerant: R404
Compressor: France Tecumseh or US Cperland
Cooling Mode: Air Cooling / Water Cooling
Dimension: 1260×830×1780mm

XJ-1000A/W

Voltage: 220/50HZ
Capacity: 445kg/24h
Power: 2.313Kw
Storage Capacity: 200kg
Refrigerant: R404
Compressor: Aspera
Cooling Mode: Air Cooling / Water Cooling
Dimension: 760×830×1750mm



Ice Maker

XJ-800A/W
Voltage: 220/50HZ
Capacity: 360kg/24h
Power: 1.65Kw
Storage Capacity: 200kg
Refrigerant: R404
Compressor: Aspera
Cooling Mode: Air Cooling & Water Cooling
Dimension: 760×830×1630mm

XJ-700A/W

Voltage: 220/50HZ
Capacity: 318kg/24h
Power: 1.374Kw
Storage Capacity: 200kg
Refrigerant: R404
Compressor: Aspera
Cooling Mode: Air Cooling / Water Cooling
Dimension: 760×830×1580mm

XJ-500A/W

Voltage: 220/50HZ
Capacity: 227kg/24h
Power: 0.95Kw
Storage Capacity: 200kg
Refrigerant: R404
Compressor: Aspera
Cooling Mode: Air Cooling / Water Cooling
Dimension: 760×830×1580mm



XJ-100A

Voltage: 220/50HZ
Capacity: 45kg/24h
Power: 0.46Kw
Storage Capacity: 15kg
Refrigerant: R134
Compressor: Aspera
Cooling Mode: Air Cooling
Dimension: 510×590×790mm

XJ-80A

Voltage: 220/50HZ
Capacity: 36kg/24h
Power: 0.39Kw
Storage Capacity: 15kg
Refrigerant: R134
Compressor: Aspera
Cooling Mode: Air Cooling
Dimension: 510×590×790mm



Ice Maker

XJ-260A/W

Voltage: 220/50HZ
Capacity: 118kg/24h
Power: 0.71Kw
Storage Capacity: 45kg
Refrigerant: R134
Compressor: Aspera
Cooling Mode: Air Cooling / Water Cooling
Dimension: 680×680×950mm

XJ-150A/W

Voltage: 220/50HZ
Capacity: 67kg/24h
Power: 0.539Kw
Storage Capacity: 45kg
Refrigerant: R134
Compressor: Aspera
Cooling Mode: Air Cooling / Water Cooling
Dimension: 680×680×950mm



Ice crusher & Ice Blender



**Ice Flaker
PB240**

Dimensions(LxWxH):
422×402×745mm
Voltage: 220V/50Hz
Power: 0.18Kw
Capacity: 120kg/h
N.W/G.W: 48/59Kgs
Packing Size: 500×400×850mm



**Ice Chopper
SB3**

Dimensions(LxWxH):
430×160×260mm
Voltage: 220V/50Hz
Power: 0.18Kw
Capacity: 120kg/h
N.W/G.W: 12/15kgs
Packing Size: 420×240×380mm



**Ice Chopper
SB6**

Dimensions(LxWxH):
430×210×300mm
Voltage: 220V/50Hz
Power: 0.18Kw
Capacity: 120kg/h
N.W/G.W: 13/16kgs
Packing Size: 440×250×350mm



**Ice Blender
DF-102**

Dimensions(LxWxH):
450×230×200mm
Volume: 2L
Voltage: 110V or 220V
Power: 1350W
Packing size: 270×235×500mm



**Ice Blender
DF-108**

Dimensions(LxWxH):
450×230×200mm
Volume: 2L
Voltage: 110V or 220V
Power: 1350W
Packing size: 270×235×500mm



**Ice Blender
DF-109**

Dimensions(LxWxH):
450×230×200mm
Volume: 2L
Voltage: 110V or 220V
Power: 1350W
Packing size: 270×235×500mm



**Ice Blender
DF-116**

Dimensions(LxWxH):
270×235×500mm
Volume: 2L
Voltage: 110V or 220V
Power: 1500W
Packing Size: 270×235×500mm



**Ice Blender
DF-117**

Dimensions(LxWxH):
270×235×500mm
Volume: 2L
Voltage: 110V or 220V
Power: 1500W
Packing Size: 270×235×500mm



**Ice Blender
DF-100**

Dimensions(LxWxH):
450×230×200mm
Volume: 2L
Voltage: 10V or 220V
Power: 1500W
Packing size: 270×235×500mm

- 1.Computer IC automatic control motor speed
- 2.The load protection
- 3.Timing function
- 4.The automatic shutdown

**Ice Blender
DF-118**

Dimensions(LxWxH):
270×235×500mm
Volume: 2L
Voltage: 110V or 220V
Power: 1500W
Packing Size: 270×235×500mm



Juice Maker & Orange Juicer

JUICE MAKER

Description

- High efficiency, easy to operate, can be used for many kinds of fruit and vegetable;
- Elegant and compact design, shells are made of aluminum alloy, food contact part made of stainless steel.



ZJ-1/ZJ-1A

Outer Spray Paint/Aluminium alloy polishing
Voltage: 220V/50Hz
Power: 0.55Kw
Motor speed: 2800r/min
Cutting Disc Dia: 136mm
Packing Size: 450x400x530mm
N.W/G.W: 27/34 kg

ZJ-145

Aluminium alloy polishing
Voltage: 220V/50Hz
Power: 0.55Kw
Motor speed: 2800r/min
Cutting Disc Dia: 145mm
Packing Size: 450x400x530mm
N.W/G.W: 27/34 kg

AUTO ORANGE JUICER (series of juice extractor)



2000E-4

Power supply: 220V 50Hz/110V 60Hz
Power: 120W
Size of orange: 40-90mm(Diameter)
Output: 20 Orange/min
Dimension(LxWxH):
400L×450W×900H(mm)
Weight: 55kg
Yield: 40%-50%



2000E-2

Power supply: 220V 50Hz/110V 60Hz
Power: 120W
Size of orange: 40-90mm(Diameter)
Output: 20 Orange/min
Dimension(LxWxH):
400L×300W×600H(mm)
Weight: 40kg
Yield: 40%-50%



2000C-4

Power supply: 220V 50Hz/110V 60Hz
Power: 120W
Size of orange: 40-90mm(Diameter)
Output: 20 Orange/min
Dimension(LxWxH):
510L×540W×1620H(mm)
Weight: 76kg
Yield: 40%-50%



2000E-5

Power supply: 220V 50Hz/110V 60Hz
Power: 120W
Size of orange: 40-75mm(Diameter)
Output: 20 Orange/min
Dimension(LxWxH):
420L×450W×680H(mm)
Weight: 43kg
Yield: 40%-50%



2000E-1 2000E-3

Power supply: 220V 50Hz/110V 60Hz
Power: 120W
Size of orange: 40-90mm(Diameter)
Output: 20 Orange/min
Dimension(LxWxH): 400L×300W×780H(mm)
Weight: 50kg
Yield: 40%-50%
Remark: 2000E-1 Plastics transparent face cover
2000E-3 Stain less steel face cover

Juice Dispenser



Juice Dispenser, Cold, Paddle Stirring System. One Bowl

Corolla-1s
 Dimension: 230×430×640mm
 Volume: 1×12L
 Voltage: 220V/50Hz
 Power: 211W
 Net Weight: 22kg
 Temperature: 3-8 °C
 Packing Size: 340×550×720mm



Juice Dispenser, Cold, Paddle Stirring System. Two Bowl

Corolla-2s
 Dimension: 430×430×640mm
 Volume: 2×12L
 Voltage: 220V/50Hz
 Power: 318W
 Net Weight: 31.5kg
 Temperature: 3-8 °C
 Packing Size: 540×550×720mm



Juice Dispenser, Cold, Paddle Stirring System. Three Bowl

Corolla-3s
 Dimension: 630×430×640mm
 Volume: 3×12L
 Voltage: 220V/50Hz
 Power: 412W
 Net Weight: 39.5kg
 Temperature: 3-8 °C
 Packing Size: 740×550×720mm



Juice Dispenser, Cold, Pump Spraying System. One Bowl

Royal-1p
 Dimension: 230×430×640mm
 Volume: 1×12L
 Voltage: 220V/50Hz
 Power: 240W
 Net Weight: 22kg
 Temperature: 3-8 °C
 Packing Size: 340×550×720mm



Juice Dispenser, Cold, Pump Spraying System. Two Bowl

Royal-2p
 Dimension: 430×430×640mm
 Volume: 2×12L
 Voltage: 220V/50Hz
 Power: 376W
 Net Weight: 31.5kg
 Temperature: 3-8 °C
 Packing Size: 540×550×720mm



Juice Dispenser, Cold, Pump Spraying System. Three Bowl

Royal-3p
 Dimension: 630×430×640mm
 Volume: 3×12L
 Voltage: 220V/50Hz
 Power: 499W
 Net Weight: 39.5kg
 Temperature: 3-8 °C
 Packing Size: 740×550×720mm



Juice Dispenser, Cold, Pump+Paddle System. Two Bowl

Smart-2sp
 Dimension: 430×430×640mm
 Volume: 3×12L
 Voltage: 220V/50Hz
 Power: 347W
 Net Weight: 31.5kg
 Temperature: 3-8 °C
 Packing Size: 540×550×720mm



Juice Dispenser, Cold, Pump+Paddle+Pump System. Three Bowl

Smart-3psp
 Dimension: 630×430×640mm
 Volume: 3×12L
 Voltage: 220V/50Hz
 Power: 441W
 Net Weight: 39.5kg
 Temperature: 3-8 °C
 Packing Size: 740×550×720mm



Juice Dispenser, Cold, Paddle+Pump+Paddle System. Three Bowl

Smart-3sps
 Dimension: 630×430×640mm
 Volume: 3×12L
 Voltage: 220V/50Hz
 Power: 470W
 Net Weight: 39.5kg
 Temperature: 3-8 °C
 Packing Size: 740×550×720mm

Color Option: Yellow, Green, White, Gray

Coffee Machine & Coffee Grinder

Description

- Patented electronic safety water display: automatic boiler water level monitoring system, it will automatically start warning when the water level is too high or the water supply is abnormal to the boiler.
- Patented removable cup holder: for Espresso, Latte coffee or disposable cups.
- Timer: displaying precise time when brewing each cup of coffee, ensuring consistent quality, rich aroma and good flavor.
- Group head automatically flushes for more convenience.



Espresso Coffee Machine GCM211

Dimension (LxWxH): 440×480×480mm
 Power: 2000W
 Boiler capacity: 6L
 Voltage: 220V, 50/60Hz
 Weight: 46Kgs
 Color: red/black/stainless steel
 Quality Certificate: CE
 Safety Certificate: C-Tick, FCC
 Coffee group: 1
 Electronic level: 1



Espresso Coffee Machine GCM211

Dimension (LxWxH): 760×522×515mm
 Power: 4000W
 Boiler capacity: 13.5L
 Voltage: 220V, 50/60Hz
 Weight: 53Kgs
 Color: red/black/stainless steel
 Quality Certificate: CE
 Safety Certificate: C-Tick, FCC
 Coffee group: 2
 Electronic level: 1



Coffee Grinder HC-600

Dimension(LxWxH): 330×210×560mm
 Grinder pan diameter: 64mm
 Bean tank capacity: 1.2Kgs
 Grinding speed: 6-9Kgs/h
 Coffee powder capacity: 250g
 Coffee powder productivity: 5-10g/time
 Power: 0.35Kw Weight: 15Kgs
 Three Models: S, T, AD
 1. International Certificate: ETL, GS, CE, NSF sanitation listed



Description

- For brewing espresso coffee and tea.
- Adjustable brewing temperature to meet different needs.
- Patented tea extraction handle for more convenience and practicality.
- Patented thermostat system to maintain the temperature of high volume tea and unlimited refills.



Professional Tea and Coffee Machine GTC312

Dimension (LxWxH): 940×522×515mm
 Power: 6000W
 Boiler capacity: 18L
 Voltage: 220V, 50/60Hz
 Weight: 76Kgs
 Color: red/black/stainless steel
 Quality Certificate: CE
 Safety Certificate: C-Tick, FCC
 Coffee group: 2
 Tea group: 1
 Electronic level :1
 The seconds group: 3



Professional Tea and Coffee Machine GTC211

Dimension (LxWxH): 710×500×520mm
 Power: 4000W
 Boiler capacity: 13.5L
 Voltage: 220V, 50/60Hz
 Weight: 57Kgs
 Color: red/black/stainless steel
 Quality Certificate: CE
 Safety Certificate: C-Tick, FCC
 Coffee group: 1
 Tea group: 1
 Electronic level :1
 The seconds group: 2



Professional Tea and Coffee Machine GTC811

Dimension (LxWxH): 760×522×515mm
 Power: 4000W
 Boiler capacity: 13.5L
 Voltage: 220V, 50/60Hz
 Weight: 53kgs
 Color: red/black
 Quality Certificate: CE
 Safety Certificate: C-Tick, FCC
 Coffee group: 1
 Tea group: 1
 Electronic level :1
 The seconds group: 2

Water Boiler



Coffee Machine RH-330 BM-1

Dimension: 219×419×478mm
Power: 2Kw
Voltage: 220-240V
N/W: 5Kgs



Coffee Machine (1 Boiler) BM-1

Dimension: 235×220×80mm
Power: 0.45Kw
Voltage: 220-240V
N/W: 1.5Kgs



Coffee Machine (2 Boilers) BM-2

Dimension: 355×175×80mm
Power: 0.9Kw
Voltage: 220-240V
N/W: 2.4Kgs



1.5/2L

30/36L

6.8/12/16L



1L

1.2/1.5/2L

1.2/1.5/2L



Water Boiler KJ-6

Dimension (LxWxH): 415×485×615mm
N.W/G.W: 13Kg/18Kg

KJ-9
Dimension (LxWxH): 445×505×560mm
N.W/G.W: 14Kg/16Kg

KJ-12
Dimension (LxWxH): 575×595×552mm
N.W/G.W: 15Kg/22Kg

KJ-15
Dimension (LxWxH): 605×630×552mm
N.W/G.W: 16Kg/23Kg



Water Boiler KSQ-6

Dimension LxWxH: 430×290×770mm
Voltage: 220V/50Hz
Power: 6kW
Capacity: 42L
N.W/G.W: 15Kg/18Kg

KSQ-9
Dimension (LxWxH): 510×310×860mm
Voltage: 380V/50Hz
Power: 9kW
Capacity: 66L
N.W/G.W: 16Kg/21Kg



KSQ-12

Dimension (LxWxH): 560×330×980mm
Voltage: 380V/50Hz
Power: 12kW
Capacity: 93L
N.W/G.W: 22Kg/25Kg

KSQ-15
Dimension (LxWxH): 590×360×110mm
Voltage: 380V/50Hz
Power: 15kW
Capacity: 126L
N.W/G.W: 25Kg/29Kg



Water Boiler KSY-10

Dimension: Φ232×390mm
Voltage: 220V/50Hz
Power: 3kW
Capacity: 10L
N.W/G.W: 3Kg/4Kg

KSY-20
Dimension: Φ286×460mm
Voltage: 220V/50Hz
Power: 3kW
Capacity: 20L
N.W/G.W: 4Kg/5Kg

KSY-30
Dimension: Φ322×505mm
Voltage: 220V/50Hz
Power: 3kW
Capacity: 30L
N.W/G.W: 5Kg/6Kg

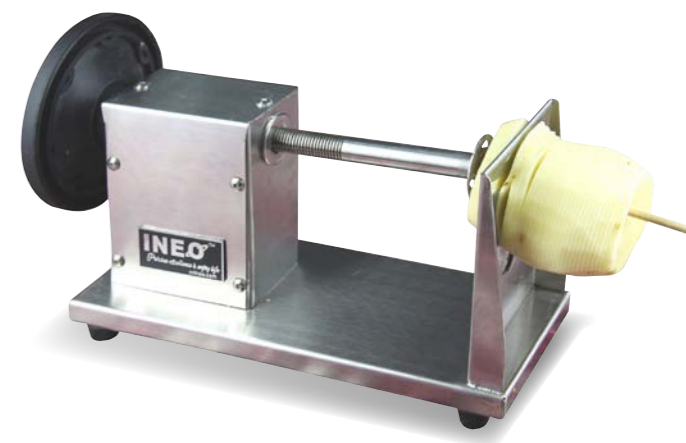
KSY-40
Dimension: Φ355×545mm
Voltage: 220V/50Hz
Power: 3kW
Capacity: 40L
N.W/G.W: 5Kg/6Kg

Spiral Potato Slicer

SPIRAL POTATO SLICER (Manual Style)

INSP-1

Professional Cutting: Spiral Type
Vegetable can be cut: Potato, Sweet Potato, Carrot, etc.
Material: 304# Stainless Steel
Slicer time: 7 Seconds for each potato
Dimension(LxWxH): 370×125×173 mm
Package Size: 390×145×193 mm
N.W: 2 Kgs



INSP-1B

2 Types of Cutting: Spiral Type, Ribbon Type
Vegetable can be cut: Potato, Sweet Potato, Carrot, Onion, Cucumber, etc.
Material: 304# Stainless Steel
Slicer time: 7 Seconds for each potato
Dimension(LxWxH): 370×125×173 mm
Package Size: 390×145×193 mm
N.W: 2 Kgs

Spare Parts: 1 more blade, 1 piece of INEO bodkin



INSP-3B

2 Types of Cutting: Spiral Type, Ribbon Type
Vegetable can be cut: Potato, Sweet Potato, Carrot, Onion, Cucumber, etc.
Slicer time: 5 Seconds for each potato
Voltage: 220 V/50 Hz, 60Hz, 110V/60 Hz
Power: 0.025 Kw
Dimension(LxWxH): 420×150×150 mm
Package Size: 440×170×170 mm
N.W: 9 Kgs

Spare Parts: 1 more blade, 1 piece of INEO bodkin



INEO Bodkin

Material: Stainless Steel
Size: 230 mm length
Function: It is easier to make a hole into potato instead of bamboo stick.

Spare Parts: 1 more blade, 1 piece of INEO bodkin



Crepe, Hamburger, Sandwich & Cone Machine



**Crepe Maker
DE-1-A**

Dimension: Φ 400×200 mm
Baking Diameter: 400 mm
Power: 3 Kw, 220-240 V
N/W: 20 Kgs



**Crepe Maker (1 Burner)
DE-1**

Dimension: 450×485×240 mm
Baking Diameter: 400 mm
Power: 3 Kw, 220-240 V
N/W: 23 Kgs



**Crepe Maker (2 Burners)
DE-2**

Dimension: 860×485×240 mm
Baking Diameter: 400 mm
Power: 6 Kw, 220-240 V
N/W: 42 Kgs

• Stainless steel body, equipped with round hot plate burner with a diameter of 400 mm, equipped with a drawer type warmer at the bottom part.



**Hamburger Machine
GF-212**

Dimension(LxWxH): 406×660×290 mm
Power: 2.4 Kw, 220-240 V
N/W: 28 Kgs

Stainless steel body, precise temperature control, temperature regulation and timing function.



**FISH PELLETT GRILL
Gas Fish Pellet Grill
(2 Burners)
CB-56**

Dimension(LxWxH): 415×465×200 mm
Power: 25591 BTU/hr
N/W: 23.5 Kgs



**Gas Fish Pellet Grill
(3 Burners)
CB-60**

Dimension(LxWxH): 605×465×200 mm
Power: 36168 BTU/hr
N/W: 31 Kgs

**Electric Fish Pellet Grill
(2 Burners)
CB-58**

Dimension(LxWxH): 415×465×200 mm
Power: 4 Kw, 220-240 V
N/W: 23 Kgs

**Electric Fish Pellet Grill
(3 Burners)
CB-62**

Dimension(LxWxH): 605×465×200 mm
Power: 6 Kw, 220-240 V
N/W: 31 Kgs



**Sandwich Maker
GHD-815**

Dimension(LxWxH): 450×370×220 mm
Power: 2.5 Kw, 220-240 V
N/W: 20 Kgs

Stainless steel body, precise temperature control, temperature regulation and timing function.



**Cone Maker (1/2 Burner)
ZU-1**

Dimension: 280×380×360 mm
Baking Diameter: 210 mm
Power: 1 Kw, 220-240 V
N/W: 9 Kgs

• 5 minutes timer, cast aluminum non-stick pan surface.

ZU-2
Dimension: 500×380×360 mm
Baking Diameter: 210 mm
Power: 2 Kw, 220-240 V
N/W: 17 Kgs

Waffle Maker & Hot Dog Machine

WAFFLE MAKER

- Stainless steel body with a unique oven diameter of 178 mm.
- With temperature control and time control function.



(1/2 Burner)

UWB-1

Dimension(LxWxH): 250×380×300 mm
Baking Diameter: 178 mm
Power: 1 Kw, 220-240 V
N/W: 8 Kgs

UWB-2

Dimension(LxWxH): 500×380×300 mm
Baking Diameter: 178 mm
Power: 2 Kw, 220-240 V
N/W: 17 Kgs



UWB-03

Dimension(LxWxH): 255×440×320 mm
Power: 1 Kw, 220-240 V
Temperature Range: 124-230 °C
Time Setting Range: 99 minutes 59 seconds to 00 minutes 00 seconds
Template can be rotated to 180°
N/W: 11 Kgs



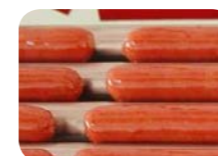
UWB-04

Dimension(LxWxH): 280×320×277 mm
Power: 1.2 Kw, 220-240 V
Temperature Range: 50-190 °C
N/W: 7 Kgs

ROLLING HOT DOG GRILL

Description

- Stainless steel polished rollers, shiny and good looking
- Optional cover can be supplied for your demands



XK-08

Dimension(LxWxH): 580×380×180 mm
Power: 1.2 Kw, 220-240 V
N/W: 10 Kgs

- Stainless steel structures, high efficiency heating elements, temperature control function, shiny and good looking



(5 rollers)

HD-05-S

Dimension(LxWxH): 580×225×225 mm
Power: 0.4 Kw, 220~240V
One thermostat controls 5 rollers



(7 rollers)

HD-07-S

Dimension(LxWxH): 580×305×225 mm
Power: 0.56 Kw, 220~240V
Two thermostats controls front 4 rollers and back 3 rollers respectively



(9 rollers)

HD-09-S

Dimension(LxWxH): 580×385×225 mm
Power: 0.72 Kw, 220~240V
Two thermostats controls front 5 rollers and back 4 rollers respectively



(11 rollers)

HD-11-S

Dimension(LxWxH): 580×465×225 mm
Power: 0.88 Kw, 220~240V
Two thermostats controls front 6 rollers and back 5 rollers respectively